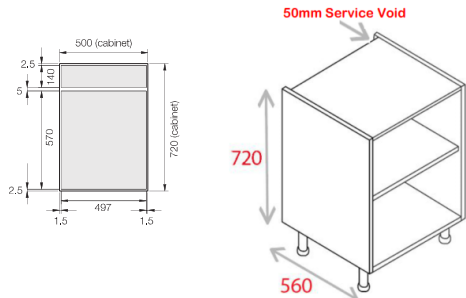
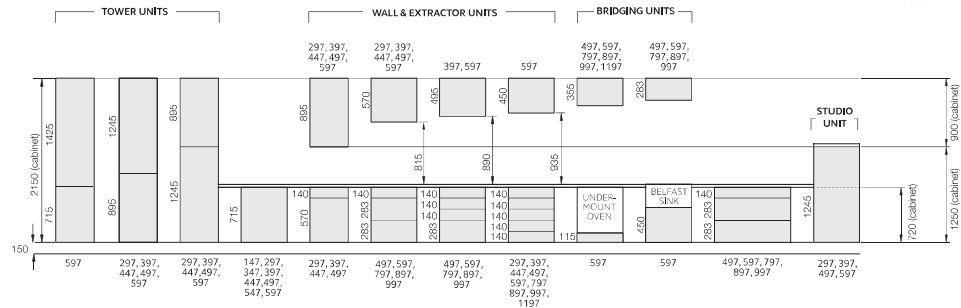


STANDARD KITCHEN MATRIX

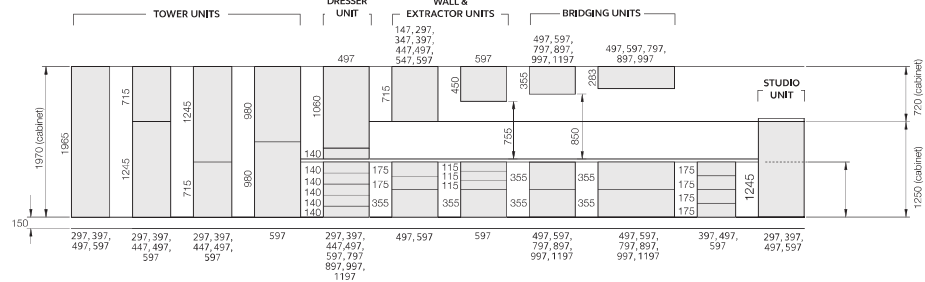
- These setting out dimensions are based on 40mm thick worktops.
- All dimensions shown are in millimetres.
- All dimensions here refer to fascia sizes unless stated otherwise.
- Studio unit & tower unit options are shown on the next page.
- With appliances, follow the manufacturer's installation instructions, particularly for hob-to-extractor distances & ventilation.
- **Check individual kitchen range contents for availability of specific fascia sizes & door types.**



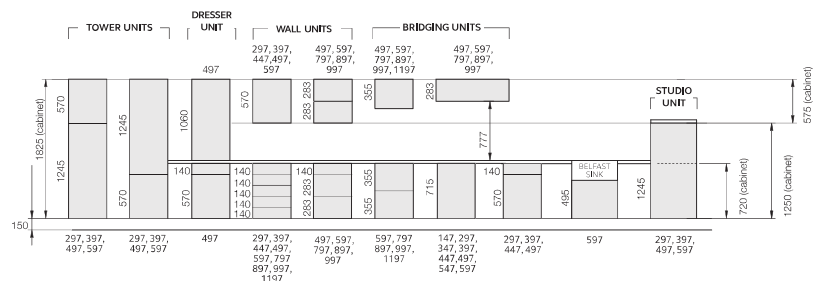
2150MM TALL HEIGHT SOLUTIONS



1970MM MEDIUM HEIGHT SOLUTIONS



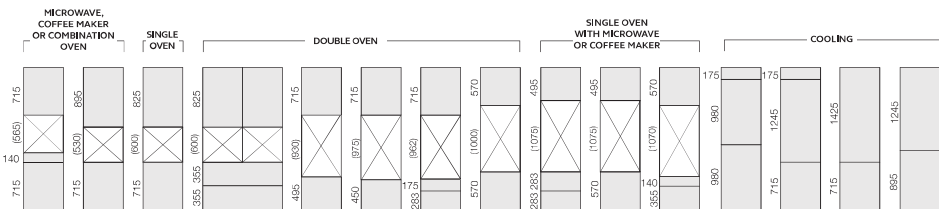
1825MM LOW HEIGHT SOLUTIONS



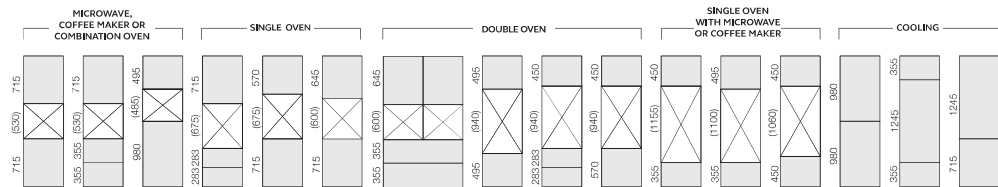
TOWER & STUDIO KITCHEN MATRIX

- All appliance units here are 600mm wide. Dimensions shown in brackets refer to appliance aperture heights (the distance between fascias).
- To reduce an aperture to the exact size, cut trimmer panels from a 597mm wide drawer fascia. The appliance shelf position must be correctly calculated to ensure appropriate appliance fascia positioning.
- Allow gaps between the appliance and cabinet fascias. These are typically 3mm between horizontally adjacent fascias and 5mm between vertically adjacent fascias.
- Follow the appliance manufacturer's installation instructions carefully. Allow proper clearances & ventilation below & behind the appliance (typically 50mm high/deep).
- **Check individual kitchen range contents for availability of specific fascia sizes & door types.**

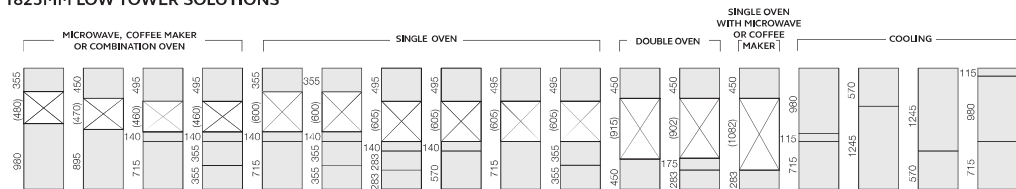
2150MM TALL TOWER SOLUTIONS



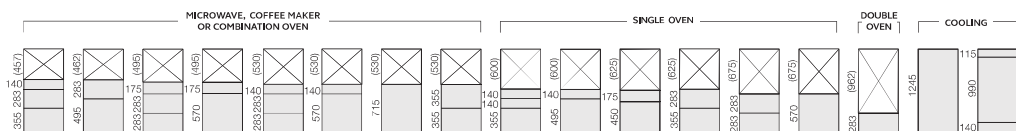
1970MM MEDIUM TOWER SOLUTIONS



1825MM LOW TOWER SOLUTIONS



1250MM STUDIO SOLUTIONS



- All appliance units here are 600mm wide. Dimensions shown in brackets refer to appliance aperture heights (the distance between fascias).
- To reduce an aperture to the exact size, cut trimmer panels from a 597mm wide drawer fascia. The appliance shelf position must be correctly calculated to ensure appropriate appliance fascia positioning.
- Allow gaps between the appliance and cabinet fascias. These are typically 3mm between horizontally adjacent fascias and 5mm between vertically adjacent fascias.
- Follow the appliance manufacturer's installation instructions carefully. Allow proper clearances & ventilation below & behind the appliance (typically 50mm high/deep).
- **Some sizes are discontinued and available while stocks last. Please refer to individual range pages for definitive list of sizes.**

Unit Type	Value
Unit 1	160
Unit 2	325
Unit 3	160
Unit 4	115
Unit 5	490
Unit 6	325
Unit 7	325
Unit 8	150
Unit 9	147
Unit 10	397
Unit 11	497
Unit 12	597

VERTICAL DOOR/TRIM APPLICATION

DOUBLE OVEN, SINGLE OVEN & MICROWAVE

Diagram showing vertical door/trim applications for double ovens, single ovens, and microwaves. Dimensions are in inches.

- Double Oven: Total height 124.5. Door height 50.0. Filler height 17.5. Total height 67.5.
- Single Oven: Total height 124.5. Door height 46.0. Filler height 17.5. Total height 63.5.
- Microwave: Total height 124.5. Door height 60.0. Filler height 17.5. Total height 77.5.

HORIZONTAL DOOR/TRIM APPLICATION

SINGLE OVEN, MICROWAVE, COFFEE MAKER OR COMBINATION OVEN

Diagram showing horizontal door/trim applications for single ovens, microwaves, coffee makers, and combination ovens. Dimensions are in inches.

- Single Oven: Total height 124.5. Door height 32.5. Filler height 16.0. Total height 48.5.
- Microwave: Total height 124.5. Door height 46.0. Filler height 17.5. Total height 63.5.
- Coffee Maker: Total height 124.5. Door height 60.0. Filler height 17.5. Total height 77.5.
- Combination Oven: Total height 124.5. Door height 46.0. Filler height 17.5. Total height 63.5.

150 Plinth

The diagram illustrates two kitchen layout options, each showing a side elevation with dimensions in millimeters.

Option 1: Fridge/Freezer and Single Oven with Microwave or Coffee Maker

- Fridge/Freezer Section:** Consists of four units. The first unit is 1965 mm high. The second unit is 1245 mm high. The third unit is 715 mm high. The fourth unit is 980 mm high.
- Single Oven with Microwave or Coffee Maker Section:** Consists of four units. The first unit is 450 mm high. The second unit is (460) mm high. The third unit is (600) mm high. The fourth unit is 450 mm high.
- Plinth:** A 150 mm high plinth runs along the bottom of the units.

Option 2: Double Oven and Single Oven, Microwave, Coffee Maker or Combination Oven

- Double Oven Section:** Consists of three units. The first unit is 450 mm high. The second unit is 570 mm high. The third unit is 490 mm high.
- Single Oven, Microwave, Coffee Maker or Combination Oven Section:** Consists of four units. The first unit is 645 mm high. The second unit is 715 mm high. The third unit is 450 mm high. The fourth unit is 715 mm high.
- Plinth:** A 150 mm high plinth runs along the bottom of the units.

The diagram illustrates two rows of kitchen cabinet configurations, each showing three units with their dimensions and internal components.

Top Row:

- FRIDGE/FREEZER:** Three units, each 1245 units high. The first unit is 895 units wide. The second unit is 895 units wide. The third unit is 715 units wide.
- SINGLE OVEN WITH MICROWAVE OR COFFEE MAKER:** Three units, each 150 Plinth high. The first unit is 490 units high, 570 units wide, and contains a filler. The second unit is 490 units high, 570 units wide, and contains a filler. The third unit is 490 units high, 570 units wide, and contains a filler.

Bottom Row:

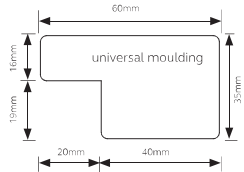
- DOUBLE OVEN:** Three units, each 1245 units high. The first unit is 895 units wide. The second unit is 895 units wide. The third unit is 715 units wide.
- MICROWAVE, COFFEE MAKER OR COMBINATION OVEN:** Three units, each 150 Plinth high. The first unit is 490 units high, 570 units wide, and contains a filler. The second unit is 490 units high, 570 units wide, and contains a filler. The third unit is 490 units high, 570 units wide, and contains a filler.

MOCK INFRAME

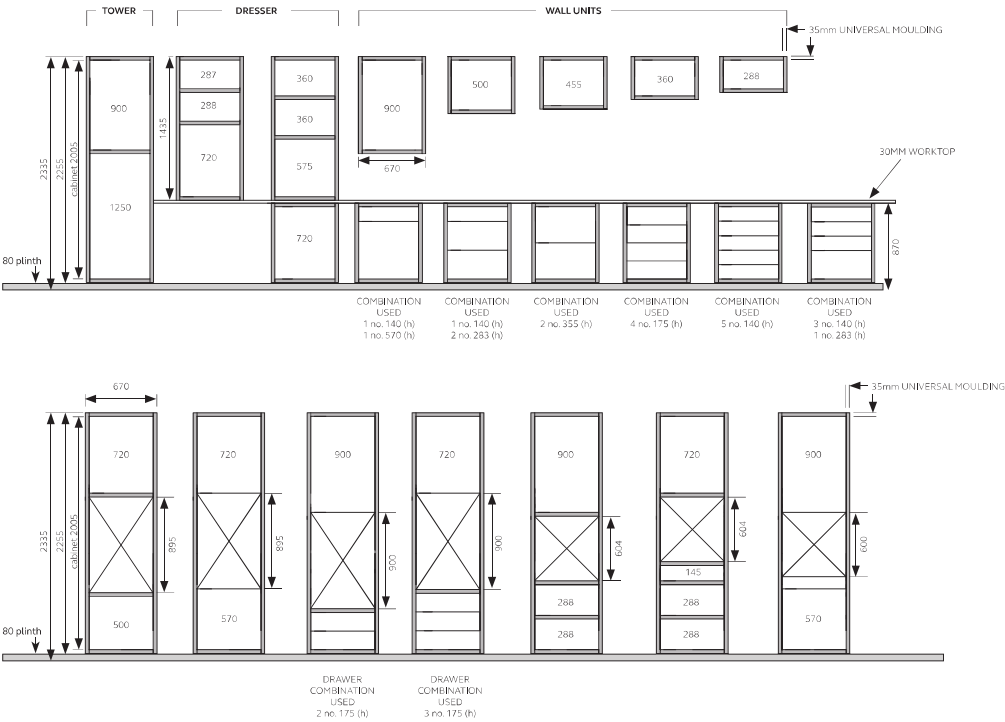
KITCHEN MATRIX

This matrix shows standard door sizes surrounded by the universal moulding. All carcasses are standard apart from tall housings.

Please note: Oven opening sizes on this matrix are as close as possible to the standard 600/900mm appliance dimensions. Please position appliance accordingly.



2335MM TALL HEIGHT SOLUTIONS (normally 2150mm)



2155MM MEDIUM HEIGHT SOLUTIONS (normally 1970mm)

